

# TateWard

A U C T I O N S



JEWELLERY, WATCHES & HANDBAGS  
10 . 12 . 19



JEWELLERY, WATCHES & HANDBAGS

**Tuesday 10<sup>th</sup> December 6pm**



## **VENUE**

The Old Truman Brewery,  
Ely's Yard,  
15 Hanbury Street,  
London,  
E1 6QR

## **CONTACT**

Francesca Garvey-Hughes, FGA  
Head of Department  
francesca@tateward.com  
0203 439 1002

## **VIEWING**

Friday 6th December 10am – 7pm  
Saturday 7th December 10am – 7pm  
Sunday 8th December 10am – 6pm  
Monday 9th December 10am – 7pm  
Tuesday 10th December 10am – 5pm

**Sale starts at 6pm**



## FREE ONLINE BIDDING

We are delighted to offer free live bidding with Tate Ward Live. Watch the auctioneer, follow the sale and bid with no additional charges. Head to **[www.tateward.com/account/register/](http://www.tateward.com/account/register/)** and create an account. The sale will go live online 20 minutes before the sale starts.

## COLLECTION & SHIPPING

Last date for collection from Tate Ward is Wednesday 18th December at 4pm, by prior appointment only. To arrange collection contact **[info@tateward.com](mailto:info@tateward.com)** or **0203 439 1001**.

Depending on the lot purchased, the last date for postage is Wednesday 18th December at 3.30pm. The charge for postage is a minimum of £20. Items will be sent out via Royal Mail Special Delivery. Please enquire ahead of purchase.

If successful we ask you pay and collect by the next working day. Invoice can be paid via our website, **[www.tateward.com/account/makepayment](http://www.tateward.com/account/makepayment)**

# Important Notice For Purchasers

Our lots are almost exclusively antique or second hand and as such should be expected to have small signs of wear and use commensurate with the age of the piece. Viewing days are held prior to auctions. We recommend that you view any items you intend to purchase as refunds cannot be given for buyer's remorse. This doesn't affect your statutory rights.

## DIAMONDS

Advancements in technology have led to some diamonds being treated in a number of ways, all designed to improve their appearance or alter their colour. Processes include but are not necessarily limited to: fracture filling, laser drilling, a combination of drilling and filling, HPHT treatment, irradiation and various coatings. Buyers are also alerted to the fact that synthetic diamonds are now produced in large quantities. Whilst every effort is made to identify or disclose treated and synthetic goods, it is not possible for Tate Ward to guarantee that all diamond set lots do not contain such material. Tate Ward do not knowingly offer treated diamonds for sale, unless a gemmological opinion disclosing the type of treatment has been obtained and the treatment would be stated within the item description.

## JEWELLERY & GEMSTONES

Purchasers are advised that whilst great care has been taken in the examination of gemstones, it is not possible to test every gemstone in multi-gemstone lots.

## COLOURED GEMSTONES

Purchasers are advised that whilst great care has been taken in the examination of gemstones, it is not possible to test every gemstone within the constraints of time and equipment available outside of laboratory conditions. Any gemstone not provided with a laboratory report has been assessed by Tate Ward within the limitations of any mounting and an opinion has been given where possible. Historically, many coloured gemstones have been subjected to a variety of treatments designed to enhance their appearance. Certain enhancement methods, such as heating, are routinely used to alter aspects of rubies, sapphires, and other gemstones. Oiling is often undertaken to enhance the clarity of emeralds. The international jewellery trade has generally accepted these and other enhancement methods. Some treatments are permanent whereas others may only be semi-permanent, possibly requiring further re-treatment in order to retain their appearance. Because of the widespread variety of treatments within the jewellery industry, prospective purchasers should assume that all gemstones will have been treated unless statements are made to the contrary. Gemmological reports from internationally recognised Gemmological Laboratories will be noted in the item description where available.

## WEIGHTS AND MEASURES

Estimated diamond weights, colours and clarities given by Tate Ward are intended as guides for prospective purchasers, with the given limitations of mounts and settings, and are opinions only, not guaranteed by Tate Ward. Weights of coloured gemstones offered are extrapolated on the estimated dimensions, using trade standard formula. Due to the traditional cutting techniques for coloured gemstones it is possible there may be discrepancy between the stated estimate and the unmounted weight. Measurements and weights provided are estimates only. The information stated in reports is the opinion of the respective laboratory and is not necessarily the opinion of Tate Ward auctioneers.

## **WATCHES**

Due to opening of some case backs or possible deterioration of seals, we recommend that watches are re-sealed by an authorised technician to ensure any stated water resistance is retained. Whilst Tate Ward makes every attempt to identify and disclose any custom attributes where possible, the absence of any disclosure is not a guarantee of authenticity. Tate Ward accepts no liability if an item is later found to be with non-brand alterations. Neither is it always possible to authenticate every component, this includes individual external and movement parts, watch glasses, hands, straps and buckles, this is often due to items having been previously maintained outside of authorised workshops, Tate Ward are therefore unable to accept any liability if any component or part is later found to be with issue – this includes compatible yet non-original brand parts and/or numbering that may limit maintenance options through workshops in the future.

Items may have export restrictions for customers outside of the EU.

Export of Gemstones, Watches, Handbags, Accessories and Parts containing materials from Endangered Species: Many of the articles offered have components, or are parts which may contain material(s) derived from endangered or protected animal materials e.g. alligator, crocodile skin and as such are prohibited by law to be exported by Tate Ward without a CITES permit. Tate Ward are therefore required to remove any restricted strap prior to delivery of the watch and buckle/clasp, and are unable to ship from their offices any other restricted part. It is the responsibility of the prospective buyer to understand and comply with any restrictions. Lots containing ivory, tortoiseshell, coral, etc. may require export or CITES licences in order to leave the UK or the EU. It is the buyer's responsibility to ensure that lots have the relevant licences before shipping them. Please also note that some countries such as the United States prohibit the purchase and import of objects originating from certain countries such as Iran, Persia and Burma/Myanmar. It is the buyer's responsibility to satisfy themselves that the lot being purchased may be imported in the country of destination.

## **VIEWING**

Tate Ward routinely provides a number of viewing days to enable prospective bidders the opportunity to view and inspect any item prior to sale. It is assumed that any buyer who has viewed an item is able to make an informed decision and was sufficiently satisfied to bid. Neither Tate Ward nor its employees, agents or vendors may accept liability for the correctness of such opinions, and all conditions and warranties, express, implied or statutory are hereby excluded.

## **CONDITION REPORT**

Statements in the catalogue regarding the condition of lots in this sale may appear in the description, however, the absence of such a reference does not imply a lack of damage or wear, or lack of any further faults within the piece. Please note that Tate Ward offer condition reports on almost every lot offered. Our condition reports are the opinion of Tate Ward and should only be referenced as a guide. We highly recommend that a prospective buyer views in person or sends a representative to satisfy themselves to the condition, originality and suitability of a piece(s) before bidding.

# How To Buy At Auction

**Register with Tate Ward, either via the website, via email or telephone. Once you've registered there are three ways to buy in our auctions.**

## *1. Bidding In The Room*

**There's nothing quite like the excitement of bidding in person.** When you arrive, head to the front desk and either register if you haven't already done so, or ask our staff for a paddle number. Your paddle number is unique to you and means you can bid on any piece during the auction. You are now ready to bid!

The auctioneer will begin by announcing the price level at which bidding will start for each piece. If you would like to bid, just give them a wave. The auctioneer will acknowledge your bid and then look to see if there is anyone else who also wants to make an offer.

If you are outbid by another person, the auctioneer will always come back to you to see if you would like to bid again. Bidding follows a set pattern of 'bidding increments'. But if you are ever in doubt of what the next bid will be, just ask the auctioneer. They want to make the auction as easy as possible so will be more than happy to tell you.

The bidding keeps going until there are no further bids at which point the lot is sold to the highest bidder – if this is you then congratulations! Now show your bidding paddle to the auctioneer who will make a note of your number. You can pay on the day and take the piece away with you or pay online and collect another time. ***It's that easy!***

## *2. Absentee Bidding*

**An absentee bid is the perfect way to bid, if you can't be at the auction in person.**

Essentially, the auctioneer bids on your behalf, as if you were at the auction. You can place absentee bids on multiple lots.

You can telephone or email us with the lots you would like to leave bids on. We just need your maximum bid. If there are no other bidders, the auctioneer will sell it to you at the reserve – which is the lowest they can sell the lot for.

If you are the successful bidder, we will email you with instructions on how to pay and collect after the auction. Registration for absentee bidding closes before the auction begins, be sure to get in touch beforehand!

### ***3. Telephone Bidding***

***Bidding on the telephone is another easy way to bid if you can't join in person.***

Simply phone or email us with the lots you would like to book a phone line for. We will need your telephone number and a back-up number in case we can't reach you.

One of the Tate Ward team will call you during the auction, usually five lots before your lot. When the lot comes up, they will describe what is happening in the auction room, what the current bid is and ask whether you would like to join the bidding.

If you are the successful bidder, we will email you with instructions on how to pay and collect after the auction. Registration for telephone bidding closes before the auction begins, be sure to get in touch before hand!

### ***4. Bidding Online***

***Bid online via Tate Ward with no additional fees.*** Bidding online is also possible via third party platform, who will levy a fee of the percentage of bid price. Simply register through the website and click on Tate Ward live.

You will be able to watch the auction live, see and hear the auctioneer and bid on your lots. If you are the successful bidder, we will email you with instructions on how to pay and collect after the auction.

### ***Payment***

***If you are successful at bidding in the auction, firstly - congratulations!***

You will receive a post sale notification email. This will detail:

- An invoice informing you of the auction hammer price and the total price including buyers premium
- Details of how to pay
- Information regarding collection and storage
- Shipping information if necessary

**Don't forget, all lots purchased at auction are subject to a buyer's premium charged at a rate of 25% of the hammer price. The premium is subject to VAT payable at the standard UK rate.**

# An Introduction

Based in the iconic Old Truman Brewery on Brick Lane, Tate Ward Auctions sits between the financial district and the creative epicentre of East London, making for a truly unique audience and auction experience.

As a dedicated and passionate jewellery department, handling, valuing and finding good homes for beautiful jewellery is what gets us out of bed in the morning! We love to meet people and talk jewels, so if there is anything you would like to know about our sales or items you would like to buy or sell, please do not hesitate to get in touch.

We hold regular jewellery auctions in the impressive galleries of the Old Truman Brewery, featuring a fantastic array of signed pieces from famous jewellery houses, as well as vintage and modern jewellery, handbags and watches, at price points for every buyer. Our auctions are informal and open for all; fresh buyers, lifelong collectors and members of the trade alike.

Although we think nothing beats the excitement of a live auction, our sales are also hosted on three online bidding platforms as well as marketed across an established network of clients. Tate Ward Jewellery believe that buying and selling jewellery at auction should be for everyone. We want to introduce new buyers and sellers to the excitement of auctions.

With a refreshingly approachable and transparent service, fantastic location and infectious passion, Tate Ward Jewellery are here to offer you something new.







**LOT 1**

**A platinum diamond three-stone ring.**

Designed as an emerald-cut diamond, flanked by tapered step-cut diamond shoulders, principal diamond weight approx. 0.50ct, ring size P.

*£220 - £280*



**LOT 2**

**A diamond necklace.**

The trace-link chain interspersed with bezel-set round brilliant-cut diamonds, total diamond weight approx. 0.88ct, length 65cm.

*£800 - £1,000*



**LOT 3**

**Christian Dior - a silver embossed leather handbag.**

Designed as embossed silver leather with polished silver-tone hardware, rear slip pocket, detachable chain-link strap with silver embossed leather insert, push lock clasp, the black leather interior with one central compartment, a zip pocket and multiple card compartments, dimensions 21 x 14 x 6cm.

*£600 - £800*



**LOT 4**

**Cartier - an emerald Panthère pendant.**

The circular-shape pendant designed as a panther with black enamel spots and a pearl-shape emerald eye, with pierced detail, suspended from an adjustable black silk cord, signed and numbered Cartier OC1441, stamped 750, French assay marks, diameter of pendant 3.9cm.

*£1,800 - £2,200*





#### LOT 5

### Omega - a 1970s stainless steel Speedmaster Professional chronograph manual wind wrist watch.

The black dial with luminous baton hour markers, subsidiary recorder dials to three, six and nine o'clock, with tachymeter bezel, fitted to an unsigned brown suede strap with stainless steel pin buckle, manual wind 861 calibre movement, numbered 145022-69, case 41mm.

**Footnote:** Because the 145.022 ran for so many years, there are many sub-references. The first, -68, can be considered a pre-moon watch because it was made in 1968 and though it contains an 861 calibre, it features an applied Omega logo on the dial. The case back is also identical to the 145.012, calibre 321 watch that predated it. Sub-reference -69, this lot, is the first to feature a painted logo on the dial while retaining the original case back on early examples. Later example of the 145.022-68 feature engraved, straight text "The First Watch Worn On The Moon."

**£4,000 - £5,000**



#### LOT 6

### An early 20th century onyx and diamond pendant.

Designed as a lozenge shape onyx centring a circular-shape diamond within a geometric openwork old-cut diamond set surround, fitted to a later 18ct gold fancy-link chain, principal diamond weight approx. 0.25ct, length of pendant 5.5cm.

**£800 - £1,200**



#### LOT 7

### Abigail Sands - a pair of wood and diamond earrings.

Carved to leaf form with circular-shape diamonds centrally set, to a similarly-set surmount, fitted posts, length 9.5cm.

**£400 - £600**



LOT 8

**Chanel - a black caviar leather Timeless WOC handbag.**

The black caviar leather with a quilted CC logo to the front, a rear zip pocket, long chain and woven leather shoulder strap, press-stud flap closure, opening to a lambskin leather lined interior with multiple card slots, slip pockets and a coin compartment with zip closure, numbered 10574132, dimensions 19 x 12.5 x 3.5cm

*£1,000 - £1,500*



LOT 10

**A pair of early 20th century white enamel and diamond cufflinks.**

Each designed as white enamel oval links with central old-cut diamonds, similarly-designed reverse, connecting hook-link chain, fitted to a Goldsmith & Silversmiths Company Ltd box, total diamond weight approx. 0.80ct, length of cufflink face 2.3cm.

*£500 - £600*



LOT 9

**Cartier - a stainless steel Pasha automatic chronograph bracelet watch.**

The silvered dial with luminous dot hour markers, Arabic numerals to twelve o'clock, subsidiary recorder dials to three, six and nine o'clock, date aperture to six, uni-directional bezel, exhibition back, fitted to a signed stainless steel bracelet with double folding clasp, reference 2113, serial 32652CD, case 38mm, with box and papers.

*£1,200 - £1,800*



LOT 11

**A pair of diamond car studs.**

The round brilliant-cut diamonds, claw set, fitted posts, total diamond weight approx. 0.65ct.

*£500 - £600*



#### LOT 12

### **Omega - a rare 1970s silver Jeux d'Argent DeVille manual wind bangle watch.**

Of impressive sculptural form, the rectangular navy blue sunburst dial with white baton hour markers, bevelled crystal glass, hidden crown, fitted to an integrated polished silver hinged bangle bracelet, numbered RS 711.1900, case 4.7mm.

**Footnote:** *This watch formed part of the Jeux d'Argent collection in 1974 and was the rarest watch of the series. As this watch is made entirely of solid silver, they often didn't survive. 'A watch should be worth looking at even when you already know the time' - 1975 Omega advertisement.*

**£2,500 - £3000**



#### LOT 13

### **Cartier - a Louis Cartier limited edition fountain pen.**

The black body with polished Roman numerals, signed Louis Cartier, nib stamped 18k, limited edition number 0913/1847, length 4.3cm, with box and ink cartridge.

**£300 - £500**



#### LOT 14

### **Louis Vuitton - an onyx Damier Infini leather pochette.**

Featuring the maker's embossed check leather exterior, external fitted D-ring, silver-tone top zip closure and a black canvas lined interior, with interior pocket, numbered TN0198, dimensions 36 x 25 x 2cm, with maker's dust bag.

**£180 - £220**



LOT 15

**Cartier - a stainless steel Roadster chronograph wrist watch.**

The silvered dial with Roman numeral hour markers, outer minute track, subsidiary recorder dials to three, six and nine o'clock, date aperture to three o'clock, fitted to a signed rubber strap with stainless steel deployant clasp, reference 3405, serial 228192RX, case 45mm.

*£1,800 - £2,200*



LOT 17

**Cartier - an 18ct gold diamond Signature Anniversary ring.**

The overlapping band, secured by a brilliant-cut diamond collet, signed and numbered Cartier AS 1293, Cartier size 56, ring size N.

*£500 - £700*



LOT 16

**Tiffany & Co. - a silver and diamond necklace.**

The openwork dragonfly set with round brilliant-cut diamonds, fitted to a trace-link chain, signed Tiffany & Co, length 41cm.

*£40 - £60*



LOT 18

**A diamond single-stone ring.**

Centring a round brilliant-cut diamond, stamped plat, diamond weight approx. 0.40ct, ring size L.

*£150 - £200*



#### LOT 19

##### **A diamond hinged bangle.**

The graduated round brilliant-cut diamonds within a scalloped edge surround, stamped 750, total diamond weight approx. 1.78cts, inner diameter 5.6cm.

**£1,500 - £2,000**



#### LOT 21

##### **Cartier - a stainless steel Santos automatic bracelet watch.**

The silvered dial with Roman numeral hour markers, date aperture between four and five o'clock, fitted to a signed stainless steel bracelet with double folding clasp, reference no. 2423, serial no. 613969CE, case 24mm.

**£650 - £750**



#### LOT 20

##### **A diamond pendant.**

Centring an octagonal-shape diamond to a circular openwork round brilliant-cut diamond surround, stamped 18k, total diamond weight approx. 0.80ct, diameter 2cm.

**£200 - £300**



#### LOT 22

##### **A diamond ring.**

The principal pear-shape diamond within a pavé-set round brilliant-cut diamond surround, principal diamond weight approx. 3.01ct, ring size N.

**£4,000 - £5,000**





**LOT 23**

**A pair of foil-back rock crystal earrings.**

The circular-shape faceted rock crystal, collet set, fitted hooks, diameter 1.4cm, together with a pair of paste earrings, of openwork scroll design, fitted hooks, length 3.7cm. (2)

*£100 - £200*



**LOT 25**

**Abigail Sands - a chalcedony collar necklace.**

The graduated chalcedony slices with stepped yellow metal spacers, to an openwork hook clasp, stamped 18k, length 48cm.

*£1,600 - £1,800*



**LOT 24**

**Valentino Garavani - a black leather Rock Stud backpack.**

The black leather with antique silver square stud detail, front zip compartment, a single top handle and two adjustable leather shoulder straps, top zip fastening and one interior slip pocket, luggage label attachment, dimensions 33 x 26 x 10cm.

*£650 - £750*



**LOT 26**

**A zircon and diamond dress ring.**

The oval-shape zircon to round brilliant-cut and baguette-cut diamond stylised openwork shoulders, ring size M.

*£1,200 - £1,800*



LOT 27

**Corum - an Admiral's Cup AC-One 45 Tides automatic wrist watch.**

The blue dial with baton hour markers and an outer minute track, with subsidiary recorder dials to six, nine and twelve o'clock, date aperture to three, exhibition case back, fitted to a signed blue rubber strap to a signed folding titanium clasp, reference 277.101.04/F373 AB12, serial 2322293, case 45mm, with box and papers.

*£2,000 - £2,500*



LOT 29

**A zircon single-stone ring.**

The oval-shape zircon to an oxidised steel mount with a yellow metal inner lining, ring size L 1/2.

*£500 - £600*



LOT 28

**A pair of foil-back sapphire and diamond earrings.**

Each step-cut sapphire to a rose-cut diamond surround, suspended from a rose-cut diamond cluster surmount, fitted hooks, length 3.6cm.

*£200 - £300*



LOT 30

**A pair of early 20th century opal earrings.**

Each designed as circular opal cabochon clusters, fitted hooks, diameter approx. 2cm

*£200 - £300*



Lot Numbers:  
149, 125, 232, 84, 28, 30





**LOT 31**

**Stella McCartney - a black vegan leather Superstellaheros clutch bag.**

With multicoloured snake-effect and glitter motif, to a black vegan leather ground, gold-tone hardware and top zip, faux black suede lined interior and inner pocket, with maker's dustbag, dimensions 35 x 24.5 x 0.5cm.

*£100 - £200*



**LOT 33**

**A diamond and gem-set pendant necklace.**

Designed as a circular-shape pink paste cabochon within an oval-shape sapphire and round brilliant-cut diamond openwork cluster, to a similarly-set surmount and cluster, fitted to an integral fancy-link chain, length of pendant 8.3cm.

*£1,200 - £1,800*



**LOT 32**

**An 18ct gold pink sapphire and diamond three-stone ring.**

Centring a square-shape pink sapphire flanked by princess-cut diamond shoulders, total diamond weight approx. 0.30ct, ring size approx. I 1/2.

*£200 - £300*



**LOT 34**

**A pink sapphire and diamond ring.**

Centring a square-shape pink sapphire, set between two round brilliant-cut diamond bands, ring size M 1/2.

*£100 - £200*



LOT 35

**A foil-back garnet and diamond cross pendant.**

The pear-shape foil-back garnet cross, to a rose-cut diamond surmount, the reverse set with rose-cut diamonds to an engraved surround, length 4.8cm.

*£50 - £70*



LOT 37

**Abigail Sands - a jasper collar necklace.**

The graduated polished jasper with rectangular yellow metal spacers, to a beaded hook clasp, length 46cm.

*£2,000 - £3,000*



LOT 36

**Louis Vuitton - a limited edition monogrammed red velvet and crocodile skin Irvine handbag.**

Designed with maker's embossed monogram red velvet exterior, brass hardware and patent crocodile skin leather trim, buckle lock fastening to a fan surmount, leather handle, rear slip pocket, red leather interior, one interior slip pocket, numbered M10094, dimensions 15 x 22 x 6.3cm.

*£500 - £600*



LOT 38

**Louis Vuitton - an 18ct gold diamond Tambour quartz wrist watch.**

The red sunburst dial with scattered round brilliant-cut diamond detail, round brilliant-cut diamond set bezel to similarly-set diamond lugs, fitted to a signed red lizard skin strap and signed 18ct gold pin buckle, reference Q1315, serial SB6036, case 32m, with box.

*£2,000 - £3,000*



LOT 39

**A coral pendant.**

Of lozenge form, designed with alternate coral and gold beads, suspending a coral and gold bead tassel swag, stamped 750, length 8.5cm.

*£250 - £300*



LOT 40

**Piaget - a Possession ring.**

Designed as a rotating band to raised sides, signed and numbered Piaget A25350, stamped 750, ring size V.

*£500 - £600*



LOT 41

**Tiffany & Co. - a tourmaline and diamond crescent brooch.**

The graduated circular-shape tourmalines terminating in old-cut and rose-cut diamonds, with a detachable brooch fitting, signed Tiffany & Co., length 3.3cm.

*£1,500 - £2,000*



LOT 42

**An early 20th century 18ct gold diamond ring.**

The old-cut diamond set in an openwork cluster with engraved scroll shoulders, hallmarked Chester 1916, ring size J.

*£60 - £80*



#### LOT 43

#### **A foil-back garnet and diamond three-stone ring.**

Centring a circular-shape garnet flanked by brilliant-cut diamond shoulders, to an engraved band, ring size L.

*£120 - £180*



#### LOT 45

#### **Mauboussin - a ruby and diamond ring.**

The lozenge-shape ruby within a pave-set round brilliant-cut diamond surround, signed and numbered Mauboussin Paris 42422, stamped 18k, total diamond weight approx. 2.10cts, ring size N 1/2.

*£1,500 - £2,000*



#### LOT 44

#### **Tiffany & Co. - a Mesh necklace by Elsa Peretti for Tiffany & Co.**

Designed as a fancy-link mesh 'V' shape chain, with a tie fastening, signed Tiffany & Co Peretti, Stamped 18K, length 64.5cm.

*Footnote: This piece is currently retailing for £8,700.*

*£3,000 - £4,000*



#### LOT 46

#### **A foil-back garnet and diamond ring.**

The garnet cabochon to old-cut diamond and garnet cabochon detail, suspending an old-cut diamond drop, to a later shank, ring size I.

*£80 - £120*



#### LOT 47

#### **An early 20th century diamond five-stone ring.**

The graduated old-cut diamonds to an openwork setting and scroll shoulders, hallmarks for Chester 1913, ring size U, together with, an 18ct gold diamond single-stone ring, centring a round brilliant-cut diamond, diamond weight approx. 0.15ct, ring size K 1/2. (2)

*£150 - £200*



#### LOT 49

#### **A ruby and diamond cluster ring.**

Centring an oval-shape ruby, to a round brilliant-cut diamond surround, to an 18ct gold shank, total diamond weight approx. 0.36ct, ring size O.

*£150 - £200*



#### LOT 48

#### **A pair of garnet and diamond earrings.**

Each designed as a pear-shape garnet cabochon drop, suspended from a rose-cut diamond and a circular garnet cabochon surmount, fitted hooks, length 4.7cm.

*£150 - £200*



#### LOT 50

#### **A pair of 18ct gold ruby stud earrings.**

Each designed as a flower centring a circular-shape ruby, fitted posts, hallmarked for London.

*£100 - £150*





**LOT 51**

### **A citrine and diamond brooch.**

The graduated oval-shape citrines with single-cut diamond accents, length 4cm.

*£600 - £800*



**LOT 53**

### **Christian Dior - a limited edition peach crocodile Lady Dior handbag.**

Designed with a polished peach crocodile skin exterior, featuring rigid top handles, polished silver-tone hardware, with hanging logo charm, top zip fastening, a peach suede lined interior and one inner zip pocket, limited edition no. 022, numbered 00-MA-1017, dimensions 19.5 x 23.5 x 11cms.

*£2,500 - £3,000*



**LOT 52**

### **A pair of citrine stud earrings.**

Each designed as an oval-shape citrine to a rope-twist surround, fitted posts, length 1.3cm, together with a pair of garnet stud earrings, of a similar design, fitted posts, length 1.5cm. (2)

*£80 - £120*



**LOT 54**

### **Cartier - an 18ct gold diamond and gem-set Panthère de Cartier necklace.**

Designed as a faceted citrine sphere with a resting Panther, set with pear-shape tsavorite garnet eyes and black enamel spots, to a diamond set bail, on a bead-link necklace, both signed and numbered Cartier AGN664, pendant detachable, French assay marks, length of pendant 4cm, with presentation box.

**Footnote:** This piece is currently retailing for £25,500 in Cartier.

*£8,500 - £9,500*



Lot Numbers:  
54, 128



#### LOT 55

### **Cartier - a pair of 18ct gold mabe pearl and diamond earrings.**

The mabe pearl to a round brilliant-cut diamond surround, fitted posts and clips, signed Cartier, total diamond weight approx. 2.24cts, diameter 2.5cm, with box.

*£4,000 - £4,500*



#### LOT 57

### **Bulgari - an 18ct gold diamond B.Zero1 ring.**

With uniform round brilliant-cut diamonds, signed Bulgari, Italian marks, total diamond weight approx. 0.60ct, ring size V 1/2.

*£600 - £800*



#### LOT 56

### **Chanel - a beige leather handbag.**

The exterior designed with a diamond stitched beige leather, with dual looping top handles, flap closure with gold-tone CC turn-lock fastening, a rear slip pocket, a leather lined interior and two inner pockets, dimensions 19 x 23 x 8cm.

*£350 - £450*



#### LOT 58

### **A collection of jewellery.**

To include; an early 20th century 9ct gold gem-set brooch, length 5cm, a late 19th century oval pendant with a glazed compartment to the reverse, length 2.7cm, a bog oak cameo brooch, to a rope twist frame, length 4.6cm. (3)

*£70 - £90*





LOT 59

**Prada - a black Saffiano leather handbag and purse.**

Crafted from lightly textured black saffiano leather, with silver-tone hardware, maker's front triangular logo plaque, dual rolled leather top handles, one central open pocket with an inner zip compartment, padlock and keys, maker's jacquard logo fabric lining, with maker's authenticity card, together with a matching similarly designed Prada purse, dimension of handbag 30 x 20 x 8cm, dimensions of purse 19 x 9 x 2cm. (2)

*£350 - £450*



LOT 61

**Cartier - an 18ct white gold Love bangle.**

The polished bangle with repeated screw head motifs, signed and numbered Cartier J93986, Cartier size 17, stamped 750, with box and papers.

*£1,300 - £1,600*



LOT 60

**Omega - a stainless steel Seamaster Professional Planet Ocean Co-Axial automatic bracelet watch.**

The black dial with luminous baton hour markers, red Arabic numerals to six, nine and twelve, date aperture to three o'clock, calibrated bezel, stainless steel case fitted to a signed stainless steel bracelet with folding clasp, numbered 81703657, case 42mm.

*£1,200 - £1,800*



LOT 62

**A diamond ring.**

Centring a round transitional-cut diamond within a baguette-cut and brilliant-cut diamond hexagonal surround, to square-shape diamond shoulders, principal diamond approx. 0.60ct, stamped 18k, ring size M.

*£1,200 - £1,800*

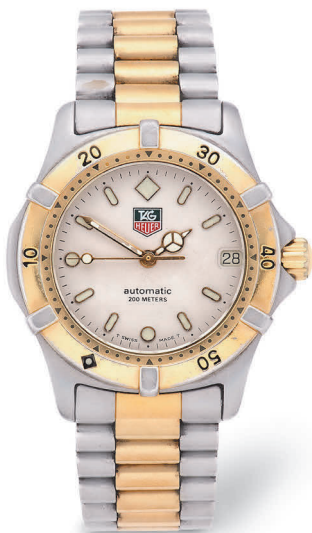


LOT 63

**An early 20th century bouton pearl and diamond brooch.**

Of openwork form, set with old-cut diamonds throughout and bouton pearl accents, length 3cm.

*£600 - £800*



LOT 65

**Tag Heuer - a stainless steel automatic bracelet watch.**

The white dial with luminous baton hour markers, date aperture to three o'clock, fitted to a signed bi-colour bracelet with folding clasp, reference 665.713T, serial P75353, circa 2000, case 30mm.

*£80 - £120*



LOT 64

**A pearl and diamond dress ring.**

Designed as a pearl drop surmounted by a round brilliant-cut diamond set bow, ring size L.

*£400 - £500*



LOT 66

**A late 19th century diamond and seed pearl star brooch.**

Centring an old-cut diamond, within a graduated seed pearl star surround and seed pearl leaf accents, may be worn as pendant, stamped 15ct, diamond weight approx. 0.30ct, length 3.6cm.

*£400 - £500*



LOT 67

**A late 19th century French 18ct gold enamel, diamond and pearl brooch.**

Realistically modelled as a jester's marotte, depicting a female jester with red and blue guilloché enamel detail and rose-cut diamond highlights, terminating in a pearl and rose-cut diamond, French assay marks, length 4.8cm.

***Footnote:** A marotte is a prop stick or sceptre with a carved head. Jesters usually used a marotte. The word is borrowed from the French, where it signifies a fool's "bauble". Typically carried by a jester or harlequin, the miniature head will often reflect the costume of the jester who carries it. This representation of a female jester extremely rare.*

**£1,800 - £2,200**



LOT 68

**Omega - a 1970s gold capped DeVille automatic watch.**

The champagne tone dial with hourly applied baton markers, date aperture to three o'clock, the round gold capped case with an exaggerated brushed bezel, fitted to an unsigned brown leather strap with pin buckle, numbered 1660094, case 42mm.

**£600 - £800**



LOT 69

**A tourmaline single-stone ring.**

The rectangular-shape green tourmaline, bezel set, stamped 18ct, ring size J, together with a 9ct gold emerald and diamond five-stone ring, ring size N 1/2. (2)

**£80 - £120**



LOT 70

**An emerald and diamond cluster ring.**

The oval-shape emerald within an abstract round brilliant-cut and baguette-cut diamond surround, total diamond weight approx. 0.54ct, ring size O 1/2.

**£450 - £550**



#### LOT 71

##### **A diamond bracelet.**

With four round brilliant-cut diamond clusters centrally set to each open work panel, framed by round brilliant-cut diamonds and scroll detail, stamped 18k 750, total diamond weight approx. 3.20-3.30cts, length 18.8cm.

*£1,200 - £1,800*



#### LOT 73

##### **Louis Vuitton - a green canvas portable Taiga garment cover.**

With brushed silver-tone hardware, an optional shoulder strap and leather top handle, maker's padlock and keys, inner wraparound zip closure and side strap fastenings, four interior hangers and multiple zip pockets, dimensions 99 x 58 x 12cm.

*£350 - £450*



#### LOT 72

##### **An emerald and diamond Harem ring.**

The three conjoined narrow band rings, each set with either rose-cut diamonds or circular-shape emeralds, ring size M 1/2.

*£150 - £200*



#### LOT 74

##### **Bulgari - an 18ct gold emerald and diamond ring.**

Designed as an oval-shape diamond flanked by two pear-shape emeralds, signed Bulgari, London import marks, diamond weight approx. 0.60ct, ring size L.

*£2,500 - £3,000*



#### LOT 75

#### **A diamond bangle.**

The uniform round brilliant-cut diamonds in white metal, stamped 750, total diamond weight approx. 3.30-3.40cts, inner diameter 6.5cm.

*£1,500 - £2,000*



#### LOT 77

#### **A pair of 18ct gold emerald and diamond stud earrings.**

Centring a circular-shape emerald within a round brilliant-cut diamond cluster, fitted ear posts, length 8mm.

*£100 - £150*



#### LOT 76

#### **A jade, coral, onyx and diamond brooch.**

The carved jade panel with diamond highlights to a round brilliant-cut diamond, coral and onyx surround, in white metal, jade and coral untested, length 3.7cm.

*£300 - £400*



#### LOT 78

#### **A foil-back emerald and diamond ring.**

Centring a collet set emerald-cut emerald, flanked by two old-cut diamonds, to a scroll design band, ring size O.

*£1,800 - £2,200*





Lot Numbers:  
79, 235, 74, 78, 182, 87, 234



LOT 79

**A pair of emerald and diamond earrings.**

Each of pendant design, set throughout with round brilliant-cut diamonds, stylised articulated panels, suspending graduated emerald cabochons, fitted posts, length 7cm.

*£1,500 - £2,000*



LOT 81

**A 1930s malachite, onyx and diamond bracelet.**

Designed as carved malachite crescent moons, together forming butterflies, with circular polished onyx spacers and ornate pierced links set with rose-cut diamonds, length 17.5cm.

*£900 - £1,200*



LOT 80

**A platinum diamond single-stone ring.**

The princess-cut diamond to a platinum shank, diamond weight approx. 0.43ct, ring size L 1/2.

*£300 - £400*



LOT 82

**Baume & Mercier - a stainless steel Capeland Flyback automatic chronograph wrist watch.**

The cream tone dial with Arabic numeral hour markers, subsidiary recorder dials to three and nine o'clock, date aperture between four and five o'clock, outer telemeter track, exhibition back, fitted to a signed embossed brown leather strap with a signed double folding clasp, reference MOA10006, serial 5870053, case 44mm, with box and papers.

*£1,500 - £2,000*



LOT 83

### A tsavorite garnet and diamond ring.

Centring an oval-shape tsavorite garnet within a baguette-cut and brilliant-cut diamond hexagonal surround, to square-shape diamond shoulders, ring size M.

*£1,000 - £1,500*



LOT 85

### Omega - an 18ct gold manual wind watch, circa 1960s.

The square dial with engine turned detail, applied baton hour markers and a similarly designed square bezel, fitted to an unsigned leather strap with gold plated pin buckle, numbered BA111017, case 29mm.

*£1,000 - £1,500*



LOT 84

### A pair of cultured pearl and diamond earrings.

Each designed as a grey pearl drop suspended from a rose-cut diamond surmount, fitted hooks, length 2.6cm.

*£100 - £200*



LOT 86

### A foil-back emerald and diamond heart ring.

The pear-shape emerald to a mix-cut diamond surround, diamond set bow surmount, scroll band, ring size O.

*£250 - £350*





LOT 87

**Cartier - an 18ct gold Love bangle.**

Set with screw head motifs, signed and numbered Cartier F64305, Cartier size 17, Swiss convention marks, inner diameter 6cm.

*£2,500 - £3,500*



LOT 89

**Patek Philippe - a yellow metal full hunter keyless wind pocket watch.**

The white enamel dial with hourly applied black Breguet numerals, subsidiary sunken seconds dial to six o'clock, bordered by a minute track, embossed round case fitted, the movement signed Patek Philippe and Bailey Banks & Biddle Co., case signed Tiffany & Co. NY, case diameter 33mm. At fault.

*£300 - £400*



LOT 88

**An early 20th century peridot and split pearl necklace.**

The circular-shape peridot to a split pearl scrolling floral drop surround, pear-shape peridot drop, suspended from a peridot surmount and a detachable trace-link chain, with brooch fitting, stamped 15ct, to a fitted box, length of brooch 4.2cm.

*£400 - £600*



LOT 90

**Miu Miu - a gold matelassé crystal leather handbag.**

Featuring maker's signature quilted gold leather exterior, with polished silver-tone hardware, two interchangeable shoulder straps to include a braided leather handle and a crystal-embellished strap, top flap closure, an embellished turn-lock fastening and two interior pockets, with maker's care card and dust bag, dimensions 34 x 20 x 4cm.

*£200 - £300*



LOT 91

**An opal doublet ring.**

The cushion-shape opal doublet, collet set, raised to an engraved yellow metal shank, ring size I.

*£400 - £500*



LOT 93

**A late Victorian century sapphire and diamond ring.**

Three graduated circular-shape sapphires within an old-cut diamond surround, stamped 18ct, ring size L 1/2

*£180 - £220*



LOT 92

**A sodalite novelty pendant.**

Realistically modelled as a four leaf clover, with carved sodalite petals, in yellow metal, length 6.5cm.

*£600 - £800*



LOT 94

**A pair of 18ct gold sapphire and diamond ear hoops.**

The circular sapphire cabochon, bezel set, to pave-set round brilliant-cut diamond surrounds, total diamond weight approx. 1.47cts, length 2.4cm.

*£700 - £900*



LOT 95

**A sapphire and diamond cluster ring.**

Centring a circular-shape sapphire within an old-cut diamond surround, total diamond weight approx. 0.56ct, ring size J.

*£180 - £220*



LOT 97

**A diamond and coloured diamond ring.**

The open work design set with old-cut diamonds throughout, total diamond weight approx. 0.68ct, ring size K.

*£180 - £220*



LOT 96

**A pair of 18ct gold mabe pearl and diamond earrings.**

Each designed as mabe pearl, within a matt gold surround, set with round brilliant-cut diamond highlights, hallmarked London 1991, total diamond weight approx. 0.64ct, diameter 2.8cm.

*£700 - £900*



LOT 98

**A mid 20th century diamond cocktail watch.**

The rectangular Arabic numeral dial, to a single-cut and baguette-cut diamond surround, with old-cut, single-cut and baguette-cut diamond stylised openwork fancy-link bracelet, to a clip clasp, total diamond weight approx. 1.50cts-2.00cts, length 18.7cm.

*£550 - £650*



Lot Numbers:  
101, 158, 217, 75, 207, 126, 202, 116





#### LOT 99

#### **A diamond single-stone ring.**

The round brilliant-cut diamond set to a 9ct gold shank, diamond weight approx. 0.66ct, ring size L.

*£150 - £200*



#### LOT 101

#### **A diamond and 'coloured' diamond hinged bangle.**

Of asymmetric design, designed as a blue paste flower with 'yellow' and 'brown' diamond set leaves, 'yellow' diamond clusters, to an open work round brilliant-cut diamond line sides, inner diameter 5.4cm.

*£1,200 - £1,800*



#### LOT 100

#### **A pair of sapphire and diamond stud earrings.**

In the form of a cross, set with vari-shape sapphires and old-cut diamond accents, fitted posts, total diamond weight approx. 0.20ct.

*£350 - £450*



#### LOT 102

#### **An 18ct gold sapphire and diamond ring.**

The pave-set sapphires with round brilliant-cut diamond pave set highlights, total diamond weight approx. 0.55ct, ring size M 1/2.

*£400 - £500*



**LOT 103**

**An impressive unheated Sri Lankan sapphire and diamond cluster ring.**

The antique cushion-shape sapphire, weighing 8.97cts, to a round brilliant-cut diamond scalloped surround and open work brilliant-cut diamond shoulders, total diamond weight approx. 2.10cts, ring size N. Accompanied by SSEF report no. 81060, dated 2nd July 2015, stating that the sapphire is natural, origin opinion Ceylon (Sri Lanka), no heat. Measuring 13.14 x 9.04 x 8.79mm.



***£15,000 - £20,000***



LOT 104

**Piaget - a Possession ring.**

Designed as a rotating band to raised sides, signed and numbered Piaget B52159, stamped 750, ring size V.

*£500 - £600*



LOT 106

**Saint Laurent - a black leather Emmanuelle fringe bucket bag.**

Designed with a single black leather fringe trim, detachable rigid rolled top handle and flat shoulder strap, gold-tone hardware and drawstring closure, zip to one side, black suede interior lining and inner slip pocket, numbered VLR381762.1214, with maker's care card, dimensions 22 x 29 x 4cm.

*£400 - £600*



LOT 105

**A cultured pearl single-strand necklace.**

Of uniform design, clasp stamped 375, length 44cm, together with a ring and brooch suite, with blue paste stones, stamped 9ct and sil, to a fitted case. (3)

*£40 - £60*



LOT 107

**An 18ct gold sapphire and diamond ring.**

With alternate circular-shape sapphires and round brilliant-cut diamonds, total diamond weight approx. 0.25ct, ring size Q.

*£120 - £180*





LOT 108

**A pair of 18ct gold diamond stud earrings.**

The brilliant-cut diamonds to fitted posts, total diamond weight approx. 1.80cts, diameter 6.2mm.

*£1,200 - £1,800*



LOT 110

**A pair of 18ct gold sapphire and diamond ear studs.**

Each designed as a circular-shape sapphire to a round brilliant-cut diamond scalloped surround, fitted posts, total diamond weight approx. 0.50ct, length 1cm.

*£120 - £180*



LOT 109

**A French mid-century sapphire and diamond ring.**

Centring an old-cut diamond within an old-cut diamond surround and calibre-cut sapphire highlights, to a stylised mount, French assay marks, principal diamond weight approx. 0.68ct, ring size J 1/2.

*£1,800 - £2,200*



LOT 111

**An 18ct gold tanzanite three stone ring.**

Centring an emerald-cut tanzanite flanked by triangular-shape tanzanite shoulders, in 18ct gold, Birmingham 2006, ring size N.

*£150 - £200*



LOT 112

**Rolex - an Oyster Perpetual Date Submariner bi-metal automatic bracelet watch.**

Blue dial with luminous hour markers, outer minute track and date aperture to three o'clock, yellow metal calibrated bezel, fitted to a signed bi-metal Oyster bracelet with fliplock clasp, reference 16803, serial R393113, case 40mm, with box.

***Footnote:** The Rolex Submariner Date 16803 was launched around 1984, but was only produced until about 1988. This particular Rolex model is special because it is one of the transitional models that introduced the sapphire crystal to Rolex watches. The 16803 also serves as Rolex's first two-tone Submariner model.*

**£4,500 - £6,500**



LOT 113

**An 18ct gold ruby and diamond pendant.**

Designed as an oval-shape ruby to a baguette-cut and round brilliant-cut diamond drop surround, length 2.7cm, together with an 18ct gold blue topaz cross pendant, length 2.1cm. (2)

**£200 - £300**



LOT 114

**Zenith - a stainless steel 3100 manual wind wrist watch.**

The silvered dial with applied baton hour markers, fitted to an unsigned black strap with stainless steel pin buckle, numbered 236 A 485, case 35mm, with box and partial papers.

**£80 - £120**



Lot Numbers:  
183, 112, 146



LOT 115

**A loose round tanzanite.**

A loose round tanzanite of 2.02cts, with an Anchor Cert Report, no. 20001238.

*£60 - £80*



LOT 116

**A tanzanite and diamond dress ring.**

Centring an oval-shape cabochon tanzanite, to a vari-cut diamond surround with milgrain detail, stamped 750, total diamond weight approx. 1.46ct, ring size M.

*£2,000 - £2,500*



LOT 117

**A pair of diamond and gem-set earrings.**

Each designed as a circular-shape pink paste cabochon within an oval-shape sapphire and round brilliant-cut diamond openwork cluster, to a similarly-set surmount and cluster, fitted posts and clip backs, length 8.2cm.

*£1,000 - £1,500*



LOT 118

**A sapphire and diamond dress ring.**

Designed as a square-shape sapphire to a round brilliant-cut diamond surround, with baguette-cut diamond highlights, stamped 750, ring size L 1/2.

*£500 - £600*





**LOT 119**

**An early 20th century sapphire and diamond brooch.**

Designed with two stacked circular-shape sapphires to graduated old-cut diamond surrounds, with similarly-cut diamond and circular-shape sapphire terminals, total diamond weight approximately 1.35ct, length 6.1cm.

*£250 - £350*



**LOT 121**

**A pair of aquamarine and diamond stud earrings.**

Each designed as an oval-shape aquamarine within a single-cut diamond surround, fitted posts, stamped 375, length 1.2cm.

*£80 - £120*



**LOT 120**

**A sapphire single-stone ring.**

In the form of a cross, set with vari-shape sapphires and old-cut diamond accents, fitted posts, total diamond weight approx. 0.20ct.

*£300 - £400*



**LOT 122**

**An aquamarine and diamond ring.**

Centering an oval-shape aquamarine to round brilliant-cut diamond shoulders, stamped 18ct, total diamond weight approx. 0.90ct, ring size L 1/2.

*£300 - £400*





LOT 123

**An aquamarine and diamond ring.**

Centring a circular-shape aquamarine within a round brilliant-cut and baguette-cut diamond tiered surround, ring size O.

*£320 - £420*



LOT 125

**A pair of cultured pearl and diamond earrings.**

Each designed as a grey pearl drop to a rose-cut diamond cap, suspended from a rose-cut diamond surmount, fitted hooks, length 3.7cm.

*£150 - £200*



LOT 124

**Hermès - a stainless steel 'Cape Cod' quartz bracelet watch.**

The metallic grey sunburst dial with Arabic numeral hour markers, inner minute track, date aperture to three o'clock, fitted to a signed bracelet and double folding clasp, with additional signed cream leather strap, reference CC2.710, serial 2274488, case 29mm.

*£500 - £700*



LOT 126

**A late 19th/ early 20th century diamond cluster ring.**

Centring an old-cut diamond within an old-cut diamond surround, to trifurcated shoulders with engraved details, total diamond weight approx. 1.30cts, ring size M.

*£600 - £800*



LOT 127

**IWC - a 9ct gold manual wind bracelet watch.**

The white dial with black Roman numerals and an outer minute track, fitted to an integral 9ct gold bracelet, hallmarks for London 1974, length 19cm. At fault.

*£500 - £600*



LOT 129

**A diamond body bar piercing.**

Each spherical terminal set with two round brilliant-cut diamonds, one detachable, total diamond weight approx. 0.70ct, length 4.3cm.

*£2,000 - £2,500*



LOT 128

**Cartier - an 18ct gold onyx and tsavorite garnet Panthère ring.**

The openwork curved band, with two panther head terminals, highlighted with onyx noses and tsavorite garnet eyes, signed and numbered Cartier BCC256, Swiss Convention marks, ring size L, with box.

*£1,000 - £2,000*



LOT 130

**A 1970s 18ct gold ring.**

Of twisted sculptural form, London import hallmarks 1976, ring size P.

*£200 - £300*



**LOT 131**

**A 1970s diamond abstract pendant.**

Of abstract design, with round brilliant-cut diamonds scattered throughout, brooch fitting and 18ct gold fancy-link chain, total diamond weight approx. 1.60 - 1.70cts, length of pendant 5.7cm.

*Purchased from West Jewellers, Dublin. Founded in 1720, West's was Ireland's oldest jewellery shop and considered one of the oldest companies in Ireland. After 290 years, West closed the doors on the Grafton Street store on the 13th February 2010. The British Royal Collection has two brooches from West & son, pieces Prince Albert bought for Queen Victoria on a visit to Dublin in 1849.*

**£800 - £1,200**



**LOT 132**

**A late 19th century ring.**

Of stylised foliate design, to a later shank, ring size L.

**£220 - £280**

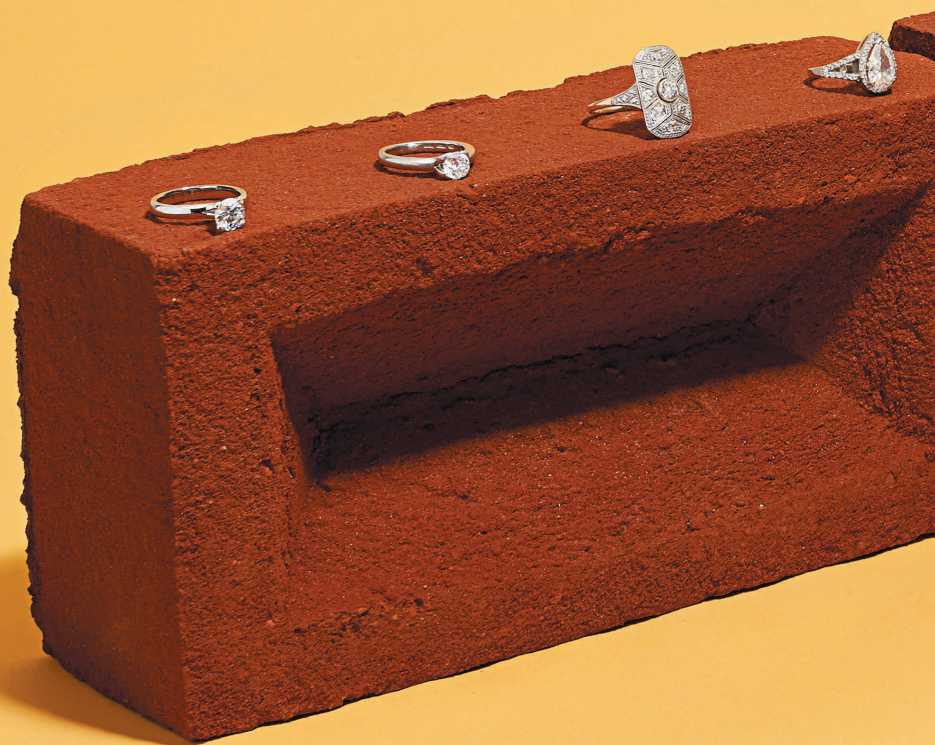


**LOT 133**

**A late 19th century French belt buckle.**

Realistically modelled as two intertwined snakes set with circular-shape ruby eyes, three-pronged buckle, French assay marks, length 5.5cm.

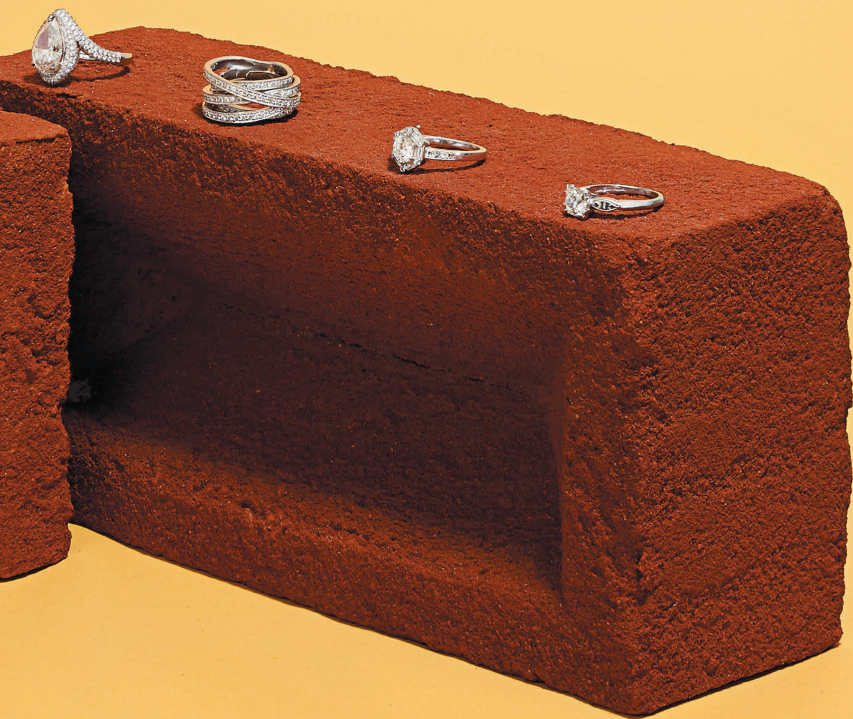
**£700 - £900**



Lot Numbers:

224, 230, 156, 153, 22, 160, 62, 173









**LOT 134**

**A pair of foil-back diamond earrings.**

Each designed as foil-back pear-shape diamonds, suspended within a graduated foil-back vari-shape diamond open work surround, surmounted by a similarly-set diamond foliate cluster, single-cut and vari-shape diamond set drops, fitted posts, length 9cm.

*£2,500 - £3,000*



**LOT 136**

**Chopard - a diamond necklace.**

The pendant designed as a star centring a round brilliant-cut diamond, signed trace-link chain, signed and numbered Chopard 79/ 5273 2195453, stamped 750, total diamond weight approx. 0.06ct, length 41cm.

*£200 - £300*



**LOT 135**

**Van Cleef & Arpels - a diamond eternity ring.**

Designed as pave-set uniform round brilliant-cut diamonds, signed and numbered Van Cleef & Arpels S 15 139, stamped 750, total diamond weight approx. 1.45cts, ring size K.

*£1,800 - £2,200*



**LOT 137**

**Piaget - a Possession ring.**

With three graduated rotating bands, signed and numbered Piaget A46782, stamped 750, with paperwork, ring size M.

*£500 - £600*



**LOT 138**

**Trabert & Hoeffer Mauboussin - a pair of 1940s diamond earrings.**

Of stylised swirl design, with bi-metal detail set with graduated rose-cut diamonds throughout, fitted hinged and adjustable screw clips, signed T&HM, length 4cm.

*£2,800 - £3,200*



**LOT 140**

**A diamond cross pendant.**

Designed as a cross, set with graduated old-cut and brilliant-cut diamonds, suspended from a polished surmount, total diamond weight approx. 2.00cts, length 7.3cm.

*£900 - £1,400*



**LOT 139**

**A diamond ring.**

Centring a round brilliant-cut diamond, to an oval-shape surround, diamond weight approx. 0.20ct, ring size J.

*£150 - £200*



**LOT 141**

**Dolce & Gabbana - a leopard print coated canvas hand bag.**

Designed with a black leather shoulder strap, leopard print canvas exterior, multi-tone polished hardware with the maker's plaque to the front and black canvas lining, black leather piping and zip fastening, with maker's authenticity cards, dimensions 21.5 x 14.3 x 5.1cm.

*£80 - £120*



**LOT 142**

**A pair of American onyx and yellow metal earrings, attributed to the Morse Brothers.**

Stylised 1960s asymmetrical design, with matt yellow metal and onyx scattered polka dot detail, fitted post and clip, signed MB, stamped 14k, length 3.1cm.

*£1,200 - £1,800*



**LOT 143**

**Bulgari - an 18ct gold B.Zero1 ring.**

Signed and numbered Bulgari ASS6HV, Italian marks, ring size W 1/2, with box and papers.

*£200 - £300*



**LOT 144**

**Cartier - a bi-metal Pasha de Cartier automatic bracelet watch.**

The silvered dial with gilt baton hour markers, Arabic numerals to twelve, three and nine o'clock, luminous hand inserts, power reserve indicator between four and eight o'clock, date aperture between four and five o'clock, calibrated bezel, fitted to a signed stainless steel bracelet with double folding clasp, reference 1033, serial CC76276, case 40mm.

*£600 - £800*



**LOT 145**

**Dolce & Gabbana - a natural woven raffia and snakeskin Claudia bucket bag.**

Designed with a woven raffia exterior and a black patent snakeskin and pom-pom trim, featuring black floral embroidery with pierced gilt metal embellishments, detachable snakeskin flat leather handle and snakeskin shoulder strap, gold-tone hardware and pom-pom embellished drawstring closure, printed polka dot canvas lining, interior with four pockets, dimensions 28 x 18 x 27cm.

*£700 - £900*



LOT 146

**H. Stern - an 18ct gold Fluid Gold necklace.**

Composed of uniform textured cylindrical gold beads, with hidden clasp and safety clip, length 3m .

*The Fluid Gold necklace is an elegant and versatile piece. It can be worn in more than several different ways; as a necklace it can be used with long loops, shorter loops or like a choker. Alternatively, it can be wrapped around the wrist like a bracelet. This necklace is currently retailing at £14,200.*

**£7,000 - £9,000**



LOT 148

**A pair of diamond earrings.**

Four panels with pave-set round brilliant-cut diamonds, with yellow metal rope twist detail, fitted post and clip, total diamond weight approx. 5.50cts, length 2.4cm, circa 1960.

**£3,500 - £4,000**



LOT 147

**Cartier - an 18ct gold and diamond Ellipse quartz wrist watch.**

The silvered dial with black Roman numeral hour markers, inner minute track, with round brilliant-cut diamond set lugs, fitted to a signed embossed black leather strap with an 18ct gold signed folding clasp, reference 1480, serial CC86040, case 26mm, with box.

**£1,500 - £2,000**

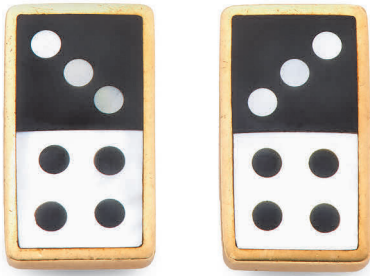


LOT 149

**A pair of foil-back diamond earrings.**

Each designed as pear-shape rose-cut diamonds within a rose-cut diamond cluster, to a rose-cut diamond cluster surmount, fitted hooks, length 3.4cm.

**£280 - £320**



LOT 150

**Tiffany & Co. - a pair of onyx and mother of pearl Lucky 7 clip earrings.**

With onyx and mother of pearl inlaid domino motifs, to a yellow metal surround, signed T&Co, stamped 18k, with clip fittings, length 3cm, with box.

*£2,000 - £2,500*



LOT 152

**Bottega Veneta - a Nero Intrecciato trolley suitcase.**

Designed with maker's signature black woven leather exterior with smooth leather sides and trim, featuring a large front zip pocket and rear slip pocket, a retractable handle and leather top and side handles, with a detachable leather ID tag, wraparound double zip fastening and a wheeled base, with maker's dust bag, dimensions 22 by 36 by 50cms.

*£1,500 - £2,000*



LOT 151

**Jaeger LeCoultre - a stainless steel Reverso Squadra Hometime automatic wrist watch.**

The stainless steel reversible case with an exhibition case back, the black dial with Arabic numeral hour markers, subsidiary dial to six o'clock, AM/PM aperture to nine and date aperture to three o'clock, fitted to a black rubber strap and a signed double folding clasp, reference 230.8.77, serial 2593864, case 35mm, with box and partial papers.

*£2,500 - £3,000*



LOT 153

**A diamond ring.**

The pear-shape diamond within a round brilliant-cut diamond surround, to similarly-set bifurcated shoulders, principal diamond weight approx. 1.55ct, ring size J 1/2.

*£3,000 - £4,000*





Lot Numbers:  
151, 236



**LOT 154**

**Two paste buckle brooches.**

Set with circular-shape pastes throughout, later fitted with brooch pins, lengths 5.5cm and 7.3cm. (2)

*£30 - £50*



**LOT 156**

**A diamond plaque ring.**

Of openwork rectangular form, the old-cut diamond collet, to a similarly-cut diamond surround, stamped 585, principal diamond weight approx. 0.40ct, ring size R 1/2.

*£520 - £580*



**LOT 155**

**A diamond hinged bangle.**

The line of round brilliant-cut diamonds to a brushed white metal surround, polished edges, stamped 950 pt, total diamond weight approx. 0.10ct, inner length 7.7cm.

*£1,500 - £2,000*



**LOT 157**

**Breitling - a Breitling for Bentley 6.75 chronograph bracelet watch.**

The black dial with baton hour markers, hands with luminous inserts, subsidiary recorder dials to three, six and nine o'clock, over-sized date aperture to twelve, rotating bezel, fitted to a signed bracelet with folding clasp, reference A44362, serial 2298766, case 48mm.

*£1,500 - £2,000*



LOT 158

**Vera Wang - an 18ct gold sapphire and diamond Love pendant.**

The brilliant-cut diamond cluster with circular-shape sapphire gallery, square-shape sapphire spacer and brilliant-cut diamond surmount, suspended from a belcher-link chain, signed Vera Wang, total diamond weight approx. 0.35ct, length of pendant 1.7cm.

*£200 - £300*



LOT 160

**A diamond ring.**

Of sculptural form, designed as five bands set with round brilliant-cut diamonds, ring size H.

*£700 - £900*



LOT 159

**Zenith - a stainless steel El Primero chronograph wrist watch.**

The white dial with hourly applied silver gilt tapered hour markers, with tachymeter bezel and a minute track, date aperture between four and five o'clock, subsidiary recorder dials to three, six and nine, with exhibition back, fitted to an unsigned brown leather strap with metal pin buckle, signed automatic calibre 400, numbered 14/01 0240 400, case diameter 40mm.

*£1,000 - £1,500*



LOT 161

**An amethyst and diamond dress ring.**

Centring a marquis-shape amethyst to baguette-cut diamond shoulders, the openwork mount set with old and brilliant-cut diamonds, stamped plat, total diamond weight approx. 0.64ct, ring size L 1/2.

*£2,000 - £2,500*





LOT 162

**An early 20th century amethyst, diamond and pearl bracelet.**

Centring a sugarloaf amethyst cabochon within a rose-cut diamond and pearl surround with circular cabochon and sugarloaf amethyst highlights, the detachable bracelets set with uniform circular cabochon amethysts with pearl accents, collet set amethysts and amethyst clasp, removable brooch fitting, in gilt base metal, length 28cm.

*£1,000 - £2,000*



LOT 164

**Tiffany & Co. - a pair of amethyst clip earrings.**

Centring a sugarloaf amethyst cabochon to a matt yellow metal rectangular surround, with hinged clips, signed Tiffany & Co, stamped 18k, length 2.1cm.

*£1,500 - £2,000*



LOT 163

**An early 20th century amethyst diamond and enamel brooch.**

Designed as a square amethyst within an openwork white enamel and rose-cut diamond surround, with hinged pendant fitting, length 4cm.

*£650 - £750*



LOT 165

**Dolce & Gabbana - a multi-coloured leather Rosalia handbag.**

Designed as multi-coloured pebbled leather panels, gold-tone hardware, twist lock clasp, a chain shoulder strap with leather insert, the interior with two compartments and a zip central compartment, fitted slip pocket with a compact mirror by Rosalia, grey suede lining, dimensions 25 x 19 x 7cm.

*£550 - £750*



LOT 166

**A late 19th century rock crystal brooch.**

The rectangular-shape rock crystal, raised from a foliate and scroll engraved surround, length 3.8cm.

*£50 - £70*



LOT 168

**Asprey - an Art Deco 9ct gold tortoiseshell cigarette case.**

Of shaped rectangular form, the tortoiseshell to a polished 9ct gold frame, signed Asprey London, hallmarks for London 1925, length 9cm, with box.

**Footnote:** The case is unique due to the patented hinge design by Asprey allowing you to slide the case open and closed with one hand.

*£1,200 - £1,800*



LOT 167

**A mid 19th century quizzing glass.**

The glass of circular form, engraved detail, later fitted with a jump ring, length 6.7cm, together with a late 19th century gilt-metal quizzing glass, length 7.3cm. (2)

*£80 - £120*



LOT 169

**Chanel - an In The Mix handbag.**

Designed with a quilted, metallic soft brown leather exterior with a contrasting glossy brown, crinkled calfskin top, with tan leather handles and chain shoulder straps, antique silver-tone hardware, maker's CC logo plaque, a magnetic snap button fastening and burgundy canvas lining, numbered 13929987, dimensions 45 x 30 x 15cm.

*£400 - £600*





**LOT 170**

**An 18ct gold diamond dress ring.**

The three openwork bands set with round brilliant-cut diamond clusters, total diamond weight approx. 0.42ct, hallmarked for Edinburgh, ring size M.

*£350 - £450*



**LOT 172**

**A pair of pearl and diamond earrings.**

Each designed as a pearl drop suspended from a rose-cut diamond openwork cluster surmount, fitted hooks, length 3.1cm.

*£180 - £220*



**LOT 171**

**An Edwardian diamond and pearl bar brooch.**

Realistically modelled as a medieval polearm, the yellow metal shaft engraved with knots and burls terminating in an Old European-cut diamond set detachable spearhead, the shaft draped with a white metal articulated 'ribbon' set with rose-cut diamonds and two pearls, pin bearing French assay marks, pearl dimensions 10mm and 8.3mm, total diamond weight approx. 1.08cts, length 6.7cm.

*£1,500 - £2,000*



**LOT 173**

**A diamond single-stone ring.**

Centring an old-cut diamond, stamped plat, diamond weight approx. 1.03ct, ring size I.

*£1,000 - £1,500*



LOT 174

**Graff - a pair of diamond ear studs.**

The trilliant-cut diamonds, fitted posts, signed and numbered Graff 4619, stamped 950, total carat weight approx. 1.70cts - 1.80cts.

*£3,200 - £3,800*



LOT 176

**Zenith - an 18ct gold Elite Chronomaster automatic wrist watch.**

The silvered dial with hourly applied gilt tapered hour markers, outer minute track, tapered date aperture to three o'clock and seconds subsidiary dial to nine o'clock, exhibition back, fitted to a signed embossed brown leather strap with yellow metal pin buckle stamped 18K 750, case stamped 18K 750, signed automatic calibre 680, numbered 30.0240.680, case diameter 38mm, with box and papers.

*£1,000 - £1,500*



LOT 175

**Theo Fennell - a diamond pendant.**

Designed as a round brilliant-cut diamond to an openwork diamond lozenge, to a trace-link chain, signed Theo Fennell, diamond weight approx. 0.10ct, length of pendant 2.5cm.

*£180 - £220*



LOT 177

**Cartier - an 18ct white gold Love ring.**

The polished band with repeated screw head motifs, signed and numbered Cartier K90400, Cartier size 54, ring size M 1/2, stamped 750, with box and papers.

*£250 - £350*



LOT 178

### A diamond bracelet.

The graduated curb-links set with graduated old-cut and brilliant-cut diamonds, total diamond weight approx. 8.50cts - 9cts, length 20cm.

*£3,200 - £3,800*



LOT 180

### An 'M' initial enamel and diamond bracelet buckle.

The old-cut diamond set Gothic 'M' to an enamel frame, length 2cm, together with a pair of French pearl earrings, fitted hooks, French assay marks, length 1.5cm. (2)

*£80 - £120*



LOT 179

### IWC - a stainless steel Ingenieur automatic bracelet watch, signed Gay Freres.

The dark grey dial with hourly applied silver gilt baton indexes with luminous inserts, bordered by a minute track, date aperture to three o'clock, round case with stainless steel rear, fitted to a stainless steel IWC bracelet and folding clasp signed Gay Freres, case diameter 39mm.

*£1,500 - £2,000*



LOT 181

### Tag Heuer - a bi-colour Aquaracer quartz bracelet watch.

The silvered dial with luminous baton hour markers and date aperture to three, fitted to a signed bi-colour bracelet with folding clasp, reference WAP1120, serial RAC7441, case 40mm.

*£200 - £300*



LOT 182

**A diamond ring.**

Of sculptural openwork form, set with round brilliant-cut diamonds, stamped 18k, total diamond weight approx. 2.10cts, ring size N.

*£1,500 - £2,000*



LOT 184

**An early 20th century American seed pearl novelty tie clip.**

The single propeller aeroplane, pave set with seed pearls, fitted to a clip, stamped 14k, length 5.9cm.

*£600 - £800*



LOT 183

**A pair of diamond stud earrings.**

The brilliant-cut diamonds to fitted posts, total diamond weight approx. 3cts, diameter 7.39mm.

*£4,000 - £5,000*



LOT 185

**Louis Vuitton - a white Multicolore Monogram Judy PM handbag.**

Designed with a white multicolour monogram canvas exterior and vachetta leather trim, with gold-tone hardware, a large chain-link handle with leather insert, with a cut-out handle, a magnetic snap button fastening and a burgundy red lined interior, dimensions 9 x 18 x 30cm.

*£200 - £300*



LOT 186

**Greenleaf & Crosby - an American Art Deco ruby and diamond compact.**

Of semi-circular shape with engine turned decoration and polished sweeping panels, with alternate calibre-cut rubies and single-cut diamond detail, opening to reveal a polished yellow metal interior and a mirror, stamped 14k, to a signed fitted leather case, length 8.4cm.

*£2,500 - £3,000*



LOT 188

**Gubelin - a 1940s ruby and diamond watch clip brooch.**

The stylised open work clip, set with calibre-cut rubies and single-cut diamond highlights, with an integrated hinge to a manual wind watch of elongated panel form, the reverse set with brooch pin hooks, dial signed L. Gubelin Lucerne, French assay marks, stamped 750, length 3.2cm.

*£1,800 - £2,200*



LOT 187

**A late 19th century diamond dragon bangle, possibly Chinese.**

The open cuff set with old-cut diamonds throughout, fine filigree foliate and scroll detail, rope-twist surround, terminating in an old-cut diamond set dragon head and old-cut diamond cluster, unmarked, total diamond weight approx. 3.00cts - 3.50cts, inner length 7cm.

*£2,000 - £3,000*



LOT 189

**Hermes - a pair of 18ct gold earrings.**

The openwork circular stud suspending a hoop and t-bar, fitted posts, signed and numbered Hermes 12C0122, length 3.3cm, with box.

*£500 - £600*





LOT 190

**Chopard - a pair of diamond ear studs.**

Designed as a six-pointed star centring a round brilliant-cut diamond, fitted posts, signed and numbered Chopard 83/ 5273 2279633, stamped 750, total diamond weight approx. 0.12ct, length 1.6cm.

*£250 - £300*



LOT 192

**Mellerio - a pair of 1940s French 18ct gold ruby and diamond earrings.**

The graduated twist-link tassels draped between an old-cut diamond and calibre-cut ruby highlighted scroll, each tassel terminating with a gold drop, fitted posts, signed and numbered Mellerio Paris 979B, French assay marks, total diamond weight approx. 0.28ct, length 3.1cm.

*Mellerio dits Meller is a French jewellery house, founded in 1613. They are still active today and claim to be the oldest family company in Europe. Directors François and Olivier Mellerio are the fourteenth generation to run the family business.*

*£2,800 - £3,200*



LOT 191

**Breitling - a bi-metal Montbrilliant Légende chronograph automatic bracelet watch.**

The silvered dial with gold tone baton hour markers, subsidiary recorder dials to three and nine o'clock, date aperture to six o'clock, rotating bi-directional bezel, fitted to a signed bi-metal bracelet with double folding clasp, reference C23340, serial 2308653, case 47mm.

*£1,500 - £2,000*



LOT 193

**Louis Vuitton - a mother of pearl Colour Blossom necklace.**

The carved mother of pearl designed as a blossom flower, to a pink metal disc, fitted cable-link chain, signed and numbered Louis Vuitton 437747, stamped 750, length 41cm, with pouch.

*This pendant is currently retailing at £2,030.*

*£500 - £600*



Lot Numbers:  
136, 193, 195, 45, 143, 57



LOT 194

**Omega - a 1950s 18ct rose gold chronometer automatic watch.**

The white dial with applied arrowhead hour markers and quarterly Arabic numerals, fitted to an unsigned embossed tan leather strap with gold tone pin buckle, numbered 11088303, case 36mm.

*£1,500 - £2,000*



LOT 196

**A pair of Victorian earrings.**

Of circular form with applied bird and foliate detail, seed pearl and paste accents, fitted hooks, length 2.2cm, together with a pair of banded agate earrings, the banded agate drops to a seed pearl surmount, fitted hooks, length 3.5cm. (2)

*£120 - £180*



LOT 195

**Cartier - an 18ct rose gold Love pendant.**

The alternate screw head motif and brilliant-cut diamond circle, fancy-link chain, signed and numbered Cartier AYY511, convention marks, diameter of pendant 2.3cm, Length of chain 43cm.

*£1,000 - £2,000*



LOT 197

**Hermes - a 1950s Piano crocodile handbag.**

Designed with a brown patent crocodile leather exterior, single rigid top handle, gold-tone hardware, top flap closure with two square push-snap fastenings and smooth soft lambskin leather lined interior, dimensions 25 x 17 x 5cm.

*£1,200 - £1,800*



LOT 198

**An early 20th century diamond five-stone ring.**

The graduated old-cut diamonds to an openwork setting and scroll shoulders, hallmarks for Chester, ring size Q, together with, an 18ct gold ruby and diamond cluster ring, ring size L. (2)

*£200 - £300*



LOT 200

**An 18ct gold diamond three-stone ring.**

Designed as three graduated round brilliant-cut diamonds, total diamond weight approx. 0.80ct, ring size L 1/2.

*£200 - £300*



LOT 199

**A collection of jewellery.**

To include; a 9ct gold opal doublet and diamond pendant on chain, length of pendant 2cm, together with, a zircon and pearl cluster bar brooch, stamped 9ct, length 5cm, a 9ct gold stylised swan brooch, length 2.5cm, a Scottish white metal brooch, diameter 4.4cm, with two brooches and two necklaces. (8)

*£400 - £600*



LOT 201

**A late 19th century pearl horseshoe pendant.**

Designed as a horseshoe with graduated split pearls, length 2.2cm.

*£80 - £120*



LOT 202

**A foil-back diamond cluster ring.**

Centring a foil-back rose-cut diamond within a rose-cut diamond surround, to an openwork shank, ring size M.

*£400 - £600*



LOT 204

**A late 19th century chrysoberyl and diamond stick pin.**

The circular-shape cat's-eye chrysoberyl cabochon within a rose-cut diamond surround, length 7cm.

*£250 - £350*



LOT 203

**A 1930s pearl portrait brooch.**

The circular panel depicting a young woman, to a split pearl border, the reverse engraved 'Mummie 1931', length 4.3cm

*£320 - £380*



LOT 205

**A collection of jewellery.**

Comprising of; four pearl beaded necklaces, four marcasite brooches, and remaining items. (15)

*£180 - £200*





LOT 206

### A pair of pearl and diamond earrings.

Centring a pearl within a rose-cut diamond surround to a pear-shape rose-cut diamond surmount, fitted hooks, length 4.5cm.

*£200 - £300*



LOT 207

### A diamond bangle.

The uniform round brilliant-cut diamonds in white metal, stamped 750, total diamond weight approx. 3.30-3.40cts, inner diameter 6.5cm.

*£1,500 - £2,000*



LOT 208

### Ebel - a bi-metal Classic Wave quartz bracelet watch

The white dial with black Roman numeral hour markers bordered by an outer minute track, date aperture to three o'clock, fitted to a signed bi-colour bracelet with folding clasp, reference 183908, serial 12624458, case 24mm.

*£40 - £60*



LOT 209

### An early 20th century diamond cocktail watch.

The circular dial, with Arabic numerals, to an old-cut diamond bezel and bi-metal expandable strap, import marks for London 1912, case stamped 18, total diamond weight approx. 1.10cts, case 2.5cm.

*£500 - £600*



LOT 210

**H Stern - a diamond and coloured diamond pendant.**

The principal circular-shape 'brown' diamond surmounted by a round brilliant-cut diamond and circular-shape 'brown' diamond surmount, to a snake-link necklace, both signed H S, stamped 750, total diamond weight approx. 0.55ct, length of pendant 2.8cm.

*£400 - £600*



LOT 212

**A pearl and diamond stick pin.**

The old-cut diamond within a bronze pearl surround, length 6.5cm.

*£80 - £200*



LOT 211

**A platinum diamond seven-stone ring.**

Designed as round brilliant-cut diamonds, London hallmarks, total diamond weight approx. 0.20ct, ring size N 1/2.

*£100 - £120*



LOT 213

**A late 19th century seed pearl ouroboros mourning brooch.**

Of oval form, the woven hair panel within a seed pearl surround, the snake with engraved detail, length 1.9cm.

*£100 - £200*



**LOT 214**

### **A French pearl and diamond ring.**

Centring three pearls with old-cut diamond accents, French assay mark, ring size L.

*£60 - £80*



**LOT 216**

### **Salvatore Ferragamo - a pony skin and black leather briefcase.**

Designed with black pony skin throughout, silver-tone hardware, black leather top handle and detachable black leather shoulder strap, clasp fastening with keys, large rear slip pocket, the interior with two black canvas lined compartments and a zip pocket, numbered FB-245037, dimensions 42 x 32 x 11cm, with makers dust bag.

*£1,500 - £2,000*



**LOT 215**

### **Universal Geneve - a manual wind wrist watch**

The gold tone dial with black baton hour markers to a yellow metal case stamped 18k 750, fitted to an unsigned brown leather strap with gold plated pin buckle, case 35mm, at fault, together with, a manual wind stainless steel wristwatch by Camerer Cuss & Co., the silvered dial with baton hour markers and Arabic numerals to twelve, three, six and nine o'clock, fitted to an unsigned black strap, numbered 7101 004/ 3725792, case 35mm. (2)

*£150 - £200*



**LOT 217**

### **An 18ct gold diamond pendant.**

Designed as a brilliant-cut diamond suspended from a trace-link chain, diamond weight approx. 0.54ct, length of pendant 1.1cm.

*£450 - £550*



LOT 218

### A pair of Whitby jet earrings.

With carved pear-shape drops, fitted hooks, length 5.8cm, together with a pair of black glass and seed pearl earrings, fitted ear hooks, length 4.2cm (2).

£80 - £120



LOT 220

### An onyx and diamond ring.

The rectangular onyx panel set with an old-cut diamond, stamped 10k, ring size R, together with, a William IV mourning conversion ring, the glazed hairwork panel within an enamel surround written 'In Memory Of' to a foliate surround, to a later shank, ring size I 1/2. (2)

**Footnote:** The mourning ring inscribed to the reverse, 'Gwl Mauroll, Died may 15, Aged 30y.'

£100 - £150



LOT 219

### Mulberry - a leather Camden bag.

Of trapeze form, in black, tan, taupe and blue leather, featuring gold-tone zip details, an adjustable shoulder strap, top zip fastening and a black suede lined interior and two interior pockets, dimensions 32 x 40 x 15cm.

£600 - £800



LOT 221

### An 18ct gold diamond eternity ring.

Designed as uniform round brilliant-cut diamonds to an engraved shank, total diamond weight approx. 0.24ct, ring size O.

£120 - £180



LOT 222

### Omega - a stainless steel Seamaster “SHOM” automatic bracelet watch

The black dial with luminous hour markers, date aperture to three o'clock, calibrated bezel, fitted to a signed stainless steel bracelet and folding clasp, numbered 166177, case 42mm.

*Footnote: The Seamaster 200 range consisted of the 166.068 in 'Banana' and 'Poppy' colourways and the 166.091 'pilot line'. Apparently, the Service Hydrographique et Océanographique de la Marine or SHOM, did not like the available options and commissioned Omega to build a 4th watch, the 166.177.*

£1,200 - £1,800



LOT 224

### A platinum diamond single-stone ring.

Centring a round brilliant-cut diamond, diamond weight approx. 1.01ct, ring size L.

£2,000 - £2,500



LOT 223

### A diamond bracelet.

The articulated, openwork panel of graduated Old European-cut diamonds to old-cut diamond highlights, to a later fancy-link bracelet stamped 750, total diamond weight approx. 1.94cts, length 18cm.

£500 - £600



LOT 225

### Chanel - an 18ct gold black ceramic and diamond 'Ultra' ring.

The black ceramic and round brilliant-cut diamond set gold flexible brick-link band, with Chanel logo panel spacer, signed and numbered Chanel 2004617, Swiss convention marks, ring size M 1/2, with box and papers.

£1,000 - £2,000





Lot Numbers:  
222, 5, 229, 15, 60



LOT 226

### **Chanel - a caviar Maxi Classic Single Flap handbag.**

Featuring the iconic diamond quilted black textured caviar leather exterior, with gold-tone hardware, rear patch pocket, CC logo turn-lock fastening, double chain and woven leather strap, with black leather lining, numbered 14102231, dimensions 33 x 23 x 10cm, with maker's box and dust bag.

**£2,500 - £3,000**



LOT 228

### **Jimmy Choo - a large Nica tote bag.**

Designed with a distressed pebbled leather exterior, with gunmetal hardware to include multi-chain and leather handles, with zip fastening, lined beige interior, with authenticity card, dimensions 45 x 40 x 20cm.

**£150 - £200**



LOT 227

### **Chopard - a bi-metal Grand Prix de Monaco Historique automatic wrist watch**

The white dial with luminous baton hour markers and Arabic numeral inserts, outer minute track, power reserve to six o'clock, fitted to a signed black strap with stainless steel clasp, reference 8568, serial 1931044, case 42mm, with box and part papers.

**£1,500 - £2,000**



LOT 229

### **Cartier - a stainless steel Roadster automatic bracelet watch.**

The silvered dial with Roman numeral hour markers, date aperture to three o'clock, inner minute track with luminous markers, fitted to a signed stainless steel bracelet with double folding clasp, reference 2510, serial 224890CE, case 38mm, with box and partial papers dating to 2003.

**£1,500 - £2,000**



LOT 230

**Roberto Coin - a platinum diamond single-stone ring.**

Designed as a round brilliant-cut diamond, the mount set with round brilliant-cut diamond accents, hallmarks for Birmingham, with signature ruby, principal diamond weight approx. 0.70ct, ring size K 1/2.

*£2,000 - £2,500*



LOT 232

**A pair of foil-back emerald and diamond earrings.**

Each designed as an oval-shape emerald and rose-cut diamond cluster, suspended within a rose-cut diamond surround, to the similarly-set diamond and emerald cluster surmount, fitted hooks, length 4.1cm.

*£200 - £300*



LOT 231

**Abigail Sands - a tourmaline fringe necklace.**

The graduated carved watermelon tourmaline, with yellow metal bead accents and fancy-bead spacers, to a hook clasp, length 41cm.

*£2,000 - £3,000*



LOT 233

**Dior - a printed satin saddle bag.**

Designed with a multi-coloured printed satin exterior, brown leather piping, with a rear pocket, flat leather shoulder strap, polished silver-tone monogram hardware, top flap closure with Velcro fastening and one interior zip pocket, numbered 01RU 1003, with maker's dust bag and care card, dimensions 24 x 19 x 4cm.

*£200 - £300*



**LOT 234**

**Cartier - a diamond Love bangle.**

Comprising alternate brilliant-cut diamonds and screw head motifs, signed and numbered Cartier RE0318, Cartier size 20, stamped 750, total diamond weight approx. 0.40ct, inner diameter 6.4cm, with screwdriver.

*£2,500 - £3,000*



**LOT 235**

**A foil-back emerald and diamond ring.**

Centring a collet set pear-shape emerald, flanked by two rose-cut diamonds, to a scroll design band, ring size M.

*£2,000 - £2,500*



**LOT 236**

**Jaeger LeCoultre - an 18ct gold Reverso manual wind wrist watch.**

The silvered dial with Arabic numeral hour markers, fitted to an unsigned embossed leather strap and signed gold plated pin buckle, reference 250.1.86, serial 16747993, case 23mm.

*£2,000 - £2,500*





# Conditions of Sale - Buying at Tate Ward Auctions Ltd

## CONDITIONS OF SALE

These conditions of Sale and important notices and explanation of cataloguing practice set out the terms on which we offer lots listed in our catalogues and online for sale. By registering to bid and/or by bidding on line or at auction you agree to these terms so you should read them carefully before bidding. Unless otherwise agreed Tate Ward acts as an agent for the seller. The contract for sale of all property is therefore made between the Seller and the Buyer.

## A. BEFORE THE SALE

### 1. Description of Lots

(a) Certain words used in the catalogue descriptions have special meanings. You can find details of these on the page headed "Important Notices"

(b) Our descriptions of any lot in the catalogue, any condition reports and any other statement made by us (whether orally or in writing) about any lot including about its nature or condition, artist, period, materials, approximate dimensions or provenance are our opinion and not to be relied upon as a statement of fact.

### 2. Our Responsibility for our description of Lots

We do not provide any guarantee in relation to the nature of a lot apart from our authenticity warranty contained in paragraph E2 and to the extent provided in paragraph I.

### 3. Condition

(a) The condition of lots sold in our auctions can vary due to factors such as age, previous damage, restoration, repair and wear and tear. Their nature means they may not be in perfect condition. Lots are sold "as is" in the condition they are in at the time of the sale, without any representation or warranty or assumption of liability of any kind as to condition by Tate Ward or by the seller.

(b) Any reference to condition in a catalogue entry or in a condition report will not amount to a full description of condition and images may not show a lot clearly. Colours and shades may look different in print or on screen to how they look on physical inspection. Condition reports are provided free of charge as a convenience to our buyers and are for guidance only. They offer our opinion but may not refer to all faults, inherent defects, restoration, alteration or adaptation because our staff are not professional restorers or conservators. For that reason they are not an alternative to examining the lot in person or taking your own professional advice.

### 4. Viewing Lots Pre-Auction.

If you are planning to bid on a lot you should inspect it personally or through a knowledgeable representative to make sure that you accept the description and its condition.

Pre-auction viewings are open to the public free of charge. Our specialists may be available to answer any questions at the view or by appointment at any time.

### 5. Estimates

Estimates are based on the condition, rarity, quality and provenance of the lots and on prices achieved at auction for similar property. Estimates can from time to time change and are not a guarantee of the actual selling price or a lots value for any other purpose. Estimates DO NOT include the buyer's premium or any applicable taxes.

### 6. Withdrawal

Tate Ward may withdraw any lot at any time prior to or during the sale. Tate Ward has no liability to any potential buyers or other interested parties for any decision to withdraw any lot.

## B. REGISTERING TO BID

### 1. New Bidders

(a) If this your first time bidding with Tate Ward you should register at least 24 hours prior to the auction to give us enough time to process and approve your registration. You will be asked for the following:

Photo Identification (driving licence, national ID card or passport)

Proof of your current address (a current utility bill or bank statement)

We may ask you to give us a financial reference and/or a deposit as a condition of allowing you to bid.

### 2. Returning bidders

We may ask for an updated ID document or a new financial reference should you look to bid on lots at a higher value than you have done in the past.

### 3. Bidding on behalf of another person

If you are bidding on behalf of another person that person will need to complete the registration requirements above before you can bid. They will also have to provide you and Tate Ward with a signed letter authorising you to bid for them and who is to settle the invoice in full.

### 4. Bidding in person

If you wish to bid in the saleroom you must register for a numbered bidding paddle at least 30 mins before the sale. You can register online at [www.tateward.com](http://www.tateward.com) or in person.

### 5. Bidding services

The bidding services described below are provided to our clients as a convenience and Tate Ward are not responsible for any errors (human or otherwise).

#### (a) Phone Bids

A request to phone bid must be made 24 hours prior to the sale. We will accept any reasonable request to telephone bid as long as we have enough staff available on the day of sale to facilitate these bids.

All telephone bids will be in English unless otherwise agreed prior to the sale.

We may record telephone bids. By bidding via telephone you agree to us recording your conversations. You also agree that your telephone bids are governed by these conditions of sale.

#### (b) Internet bids

We will accept bids via the internet. You can bid via [www.tateward.com](http://www.tateward.com) or by one of our online partners such as Invaluable, the saleroom.com or Artsy. There may be a charge for bidding on these platforms please see the websites for details.

#### (c) Written bids

You can find a written bid form at the back of each of our catalogues, at our office and online at [www.tateward.com](http://www.tateward.com)

We must receive your completed written bid form at least 24 hours before the sale. All bids must be in GBP. The auctioneer will take reasonable steps to carry out written bids at the lowest possible price, taking into account the reserve. For identical winning written bids we will sell the lot to the bidder whose bid we received first.

## C. AT THE SALE

### 1. Who can attend the auction

All auctions are open to the public however Tate Ward may in our opinion refuse admission to the auction premises or decline to permit participation in any auction.

### 2. Reserves

Unless otherwise indicated all lots are subject to a reserve. The reserve cannot be more than the low estimate.

### 3. Auctioneer's discretion

The auctioneer can at his/her sole option:

(a) refuse any bid

(b) Move the bidding backwards or forwards in any way he or she may decide.

(c) Withdraw any lot

(d) reopen or continue the bidding even after the hammer has fallen

(e) In the case of error or dispute, cancel the sale or re open bidding in or after the sale.

### 4. Bidding

The auctioneer accepts bids from:

(a) Bidders in the saleroom

(b) Telephone and internet bidders

(c) Written bids (also known as absentee or commission bids)

### 5. Bidding on behalf of the seller

The auctioneer may bid on behalf of the seller up to but not including the amount of the reserve. No bids on behalf of the seller will be actioned at or above the reserve.

### 6. Bid increments

Bidding usually starts below the low estimate and increases in steps (bid increments). The auctioneer will decide at his or her sole opinion where the bidding should start and the bid increments. Any increments shown on the bid form or [www.tateward.com](http://www.tateward.com) are for guidance only.

### 7. Successful Bids

Unless the auctioneer decides to use his/her discretion when the auctioneer's hammer strikes we have accepted the last bid. This means a contract for the sale of the lot has been formed between the seller and the successful bidder. We will issue an invoice to the registered bidder who made the successful bid. Whilst we send out invoices by post and or email after the auction we do not accept responsibility for telling you whether or not your bid was successful. You should contact us by telephone, in person or email as soon as possible after the auction to get details of the outcome of your bid.

## D. THE BUYERS PREMIUM, TAXES AND ARTISTS RESALE ROYALTY (ARR)

### 1. The Buyers Premium

In addition to the hammer price the successful bidder agrees to pay us a buyer's premium on the hammer price of each lot sold. On all lots we charge 25% plus VAT of the hammer price up to and including £500,000, 12% plus VAT on that part of the hammer price above £500,001. A buyers premium of 19.5% plus VAT is charged on Wine and Spirits.

### 2. Taxes

The successful bidder is responsible for any applicable tax, including any VAT, sales or equivalent tax wherever they arise on the hammer price and the buyers premium. It is the buyers to ascertain and pay all taxes due.

### 3. Artists Resale Royalty (ARR)

In certain countries local laws entitle the artist or the artists estate to a royalty know as ARR when any lot created by the artist is sold. We identify all these lots in all sales both in our catalogues and online. If these laws apply to a lot you must pay us an extra amount equal to the royalty. We will pay the royalty to the appropriate authority on our clients behalf. ARR applies if the hammer price of the lot is 1,000 Euro or more. The total ARR on any lot cannot be more than 12,500 Euro. The following table has been provided to us by the collection agency DACS.

4% up to 50,000

3% between 50,001 and 200,000

1% between 200,001 and 350,000

0.50% between 350,001 and 500,000

Over 500,001 the lower of 0.25% and 12,500 Euro

We will work out the ARR using the Euro to Sterling (GBP) rate of exchange of the Bank of England on the day of the auction.

## E. WARRANTIES

### 1. Seller Warranties

For each lot the seller gives a warranty that the seller:

- (a) is the owner of the lot or a joint owner of the lot acting with the permission of the other owner(s).
- (b) has the right to transfer ownership of the lot to the buyer without any restrictions or claims by anyone else.

## **2. Our Authenticity Warranty**

We warrant that the lots in our sales are authentic. If within 30 days from the date of sale you satisfy us that your lot is not authentic we will refund the purchase price paid by you (We would expect at least 2 independent specialists recognized by us to provide written evidence that the lot is not authentic and the reasons for their opinion)

## **F. PAYMENT**

### **1. How to pay**

(a) Immediately following the auction you must pay the purchase price being:

- (i) the hammer price and
- (ii) the buyers premium and
- (iii) any other amounts due under section D any
- (iv) any duties , VAT and services taxes

Payment is due no later than by the end of the seventh calendar day following the date of the auction.

(b) We will only accept payment from the registered bidder. Once issued we cannot change the buyers name on the invoice or re issue the invoice in a different name. You must pay immediately even if you want to export the lot and you need an export licence.

(c) You must pay for the lots bought at Truman Ward in GBP in one of the following ways:

- (i) Bank Transfer to:  
Barclays Bank, Southend on Sea branch, Account number: 93810798, Sort Code: 20-79-73
- (ii) Credit card

We accept most major credit cards subject to certain conditions

(iii) Cash

We accept cash up to a maximum of £5,000 per buyer per sale.

(c) You must quote the sale number , your invoice number and client number when making payment.

(d) for any more information please contact Tate Ward on any number listed on [www.tateward.com](http://www.tateward.com)

### **2. Transferring ownership to you**

You will only own the lot once we have received cleared funds and you have paid the invoice in full. We will then release the lot to you.

### **3. Transferring Risk to you**

The risk and responsibility for the lot will transfer to you from whichever is the earlier of the following:

- (a) When you collect the lot or
- (b) At the end of the 14th day following the date of the auction (the free storage period)

### **4. What happens if you do not pay**

(a) If you fail to pay us the purchase price in full by the due date, we will be entitled to do one or more of the following (as well as enforce our rights or remedies we have by law)

(i) we can cancel the sale of the lot. If we do this we may sell the lot again , publicly or privately on such terms we see fit in which case you must pay us any shortfall between the (original) purchase price and the proceeds from the resale. You must also pay all costs, expenses, losses, damages and legal fees we have had to pay or may suffer.

(ii) we can pay the seller an amount up to the net proceeds payable in respect of the amount bid by your default in which case you acknowledge and understand that Tate Ward will have all the rights of the seller to pursue you for such amounts.

(iii) we can hold you legally responsible for the purchase price and may begin legal proceedings to recover it together with other losses, interest, legal fees and costs as far as we are allowed by law.

(iv) we can take what you owe us from any amounts which we may owe you

(v) we can at our opinion reveal your identity and contact details to the seller's legal representative.

(vi) we can take any other action we see necessary or appropriate.

(b) if you make payment in full after the due date and we choose to accept such payment we may charge you storage and transport costs from the date that is 14 calendar days following the auction.

### **5. Keeping your property**

If you owe money to us as well as the rights set out in F4 above we can use or deal with any of your property we hold in any way we are allowed to by law. We will only release your property to you after you pay us in full for what you owe. However if we choose we can also sell your property in any way we think appropriate. We will use the proceeds of the sale against any amounts you owe us and we will pay any amount left from that sale to you. If there is a shortfall you must pay us any difference between the amount we have received from the sale and the amount you owe us.

## **G. COLLECTION AND STORAGE**

(a) We ask that you pay for and collect all purchased lots on the day of the auction.

(b) If you do not collect any lot on the day of the auction we can at our opinion remove the lot to a third party warehouse.

(c) If you do not collect a lot within 14 calendar days from the date of auction then unless otherwise agreed in writing:

(i) we will charge you storage charges from that date

(ii) as stated above the lot will be moved to a third party warehouse and they will charge you transport and handling fees for doing so.

(iii) we may sell the lot in any commercially reasonable way we think appropriate.

## **H. TRANSPORT AND SHIPPING**

Tate Ward do not have a shipping department but can recommend several fine art shipping companies. (please see [www.tateward.com](http://www.tateward.com) for details)

We are not responsible for the acts of any recommended companies.

All post sale shipping is solely at the buyers expense and includes insurance, postage, import and export permits and any other licence necessary.

## **I. OUR LIABILITY TO YOU**

(a) We give no warranty in relation to any statement made, or information given, by us or our employees about any lot other than as set out in the authenticity warranty and as far as we are allowed by law, all warranties and other terms which may be added to this agreement by law are excluded. The seller's warranties contained in paragraph E1 are their own and we do not have any liability to you in relation to those warranties.

(b) We are not responsible to you for any reason other than in the event of fraud or fraudulent misrepresentation by us or other than as expressly set out in these conditions of sale.

(c) In particular please be aware that our written and telephone bidding services, online, condition reports, currency conversion and any other saleroom services are free services and we are not responsible to you for any errors (human or otherwise)

(d) We have no responsibility to any person other than a buyer in connection with the purchase of any lot.

(e) If in spite of the terms in paragraphs (a) to (d) or E2 above we are found to be liable to you for any reason we shall not have to pay more than the purchase price paid by you to us. We will not be responsible to you for any reason for loss of profits or business, loss of opportunity or value, expected savings or interest, costs, damages or expenses.

## **J. OTHER TERMS**

### **1. Our ability to cancel.**

In addition to the other rights of cancellation contained in this agreement we can cancel a sale of a lot if we reasonably believe that completing the transaction is, or may be, unlawful or that the sale places us or the seller under any liability to anyone else or may damage our reputation.

### **2. Recordings**

We may record proceedings at any auction. We will keep any personal information confidential, except to the extent of disclosure is required by law. Unless we agree otherwise in writing you may not record proceedings at any auction.

### **3. Copyright**

We own the copyright to all images, illustrations and written material produced by or for us relating to a lot. You cannot use them without our prior written permission.

### **4. Law and disputes**

This agreement and non-contractual obligations arising out of or in connection with this agreement, or any other rights you may have relating to the purchase of a lot will be governed by the laws of England and Wales.

### **5. Reporting on [www.tateward.com](http://www.tateward.com)**

Details of all lots sold by us, including catalogue descriptions and prices may be reported on [www.tateward.com](http://www.tateward.com). Sales totals are hammer price plus buyers premium and not reflect costs, financing fees or application of buyers or sellers credits. We regret that we cannot agree to requests to remove these details from [www.tateward.com](http://www.tateward.com)



